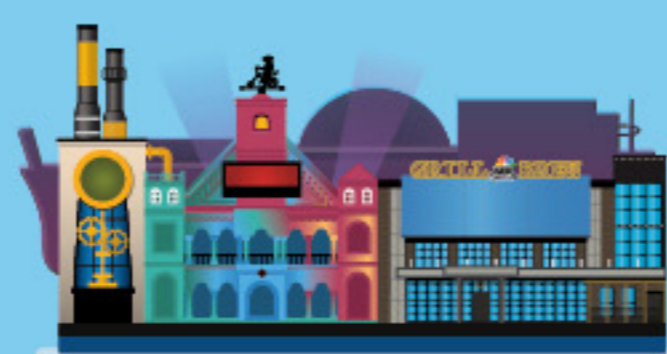


UNIVERSAL ORLANDO RESORT TRANSPORTATION GUIDE

DESTINATIONS



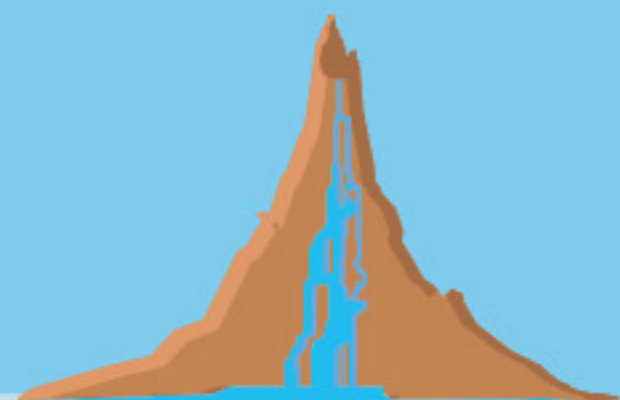
UNIVERSAL STUDIOS FLORIDA



UNIVERSAL CITYWALK



UNIVERSAL'S ISLANDS OF ADVENTURE



UNIVERSAL'S VOLCANO BAY

HOTELS

WAYS TO GET TO THE PARKS



LOEWS PORTOFINO BAY HOTEL



WALKING



SHUTTLE BUS



WATER TAXI

UNIVERSAL STUDIOS FLORIDA	15 - 20 mins	● 15 - 20 mins	▲ 6 - 10 mins
CITYWALK	15 - 20 mins	● 15 - 20 mins	▲ 6 - 10 mins
ISLANDS OF ADVENTURE	20 - 25 mins	● 15 - 20 mins	▲ 6 - 10 mins
VOLCANO BAY		● 10 - 15 mins	



HARD ROCK HOTEL®

UNIVERSAL STUDIOS FLORIDA	8 - 15 mins	● 15 - 20 mins	▲ 5 - 10 mins
CITYWALK	8 - 15 mins	● 15 - 20 mins	▲ 5 - 10 mins
ISLANDS OF ADVENTURE	12 - 15 mins	● 15 - 20 mins	▲ 5 - 10 mins
VOLCANO BAY		● 10 - 15 mins	



LOEWS ROYAL PACIFIC RESORT

UNIVERSAL STUDIOS FLORIDA	15 - 20 mins	● 15 - 20 mins	▲ 7 - 10 mins
CITYWALK	10 - 15 mins	● 15 - 20 mins	▲ 7 - 10 mins
ISLANDS OF ADVENTURE	10 - 15 mins	● 15 - 20 mins	▲ 7 - 10 mins
VOLCANO BAY		● 10 - 15 mins	



LOEWS SAPPHIRE FALLS RESORT

UNIVERSAL STUDIOS FLORIDA	20 - 25 mins	● 15 - 20 mins	▲ 6 - 10 mins
CITYWALK	15 - 20 mins	● 15 - 20 mins	▲ 6 - 10 mins
ISLANDS OF ADVENTURE	15 - 20 mins	● 15 - 20 mins	▲ 6 - 10 mins
VOLCANO BAY	5 - 10 mins	● 10 - 15 mins	



CABANA BAY BEACH RESORT

UNIVERSAL STUDIOS FLORIDA	30 - 35 mins	◆ 10 - 15 mins	
CITYWALK	25 - 30 mins	◆ 10 - 15 mins	
ISLANDS OF ADVENTURE	25 - 30 mins	◆ 10 - 15 mins	
VOLCANO BAY	5 - 10 mins		



UNIVERSAL'S AVENTURA HOTEL

UNIVERSAL STUDIOS FLORIDA	30 - 35 mins	◆ 10 - 15 mins	
CITYWALK	25 - 30 mins	◆ 10 - 15 mins	
ISLANDS OF ADVENTURE	25 - 30 mins	◆ 10 - 15 mins	
VOLCANO BAY	5 - 10 mins		



UNIVERSAL'S ENDLESS SUMMER RESORT

UNIVERSAL STUDIOS FLORIDA		◆ 10 - 15 mins	
CITYWALK		◆ 10 - 15 mins	
ISLANDS OF ADVENTURE		◆ 10 - 15 mins	
VOLCANO BAY		◆ 10 - 15 mins	

● SHUTTLE BUSES TO PORTOFINO BAY HOTEL, ROYAL PACIFIC RESORT, HARD ROCK HOTEL AND SAPPHIRE FALLS RESORT - EVERY 30 MINS STARTING ONE HOUR PRIOR TO PARK OPEN - 2 AM

◆ SHUTTLE BUSES FOR CABANA BAY BEACH RESORT, AVENTURA HOTEL AND UNIVERSAL'S ENDLESS SUMMER RESORT - EVERY 10 - 15 MINUTES

▲ WATER TAXI - EVERY 15 - 20 MINUTES